



# CPA Webinar: Meeting the Challenges of a New Construction Landscape

6th October 2020 at 11am - 12pm

Thank you for joining!  
The webinar will begin shortly.



# CPA Webinar: Meeting the Challenges of a New Construction Landscape

6th October 2020 at 11am - 12pm

Hanna Clarke  
Digital and Policy Manager

[Hanna.clarke@constructionproducts.org.uk](mailto:Hanna.clarke@constructionproducts.org.uk)  
[Fabiola.flamini@constructionproducts.org.uk](mailto:Fabiola.flamini@constructionproducts.org.uk)

 | construction products  
association

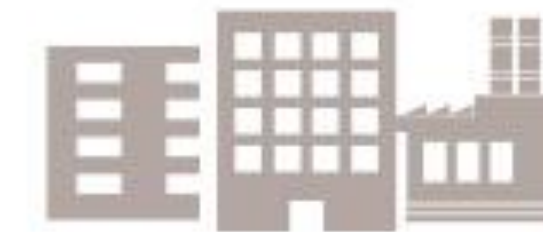


78% of all construction products used in the UK are made in the UK.

Our Industry



directly provides  
337,000 jobs



working across  
24,000 companies



with an annual turnover of more than  
£60 billion

85% of the industry by value



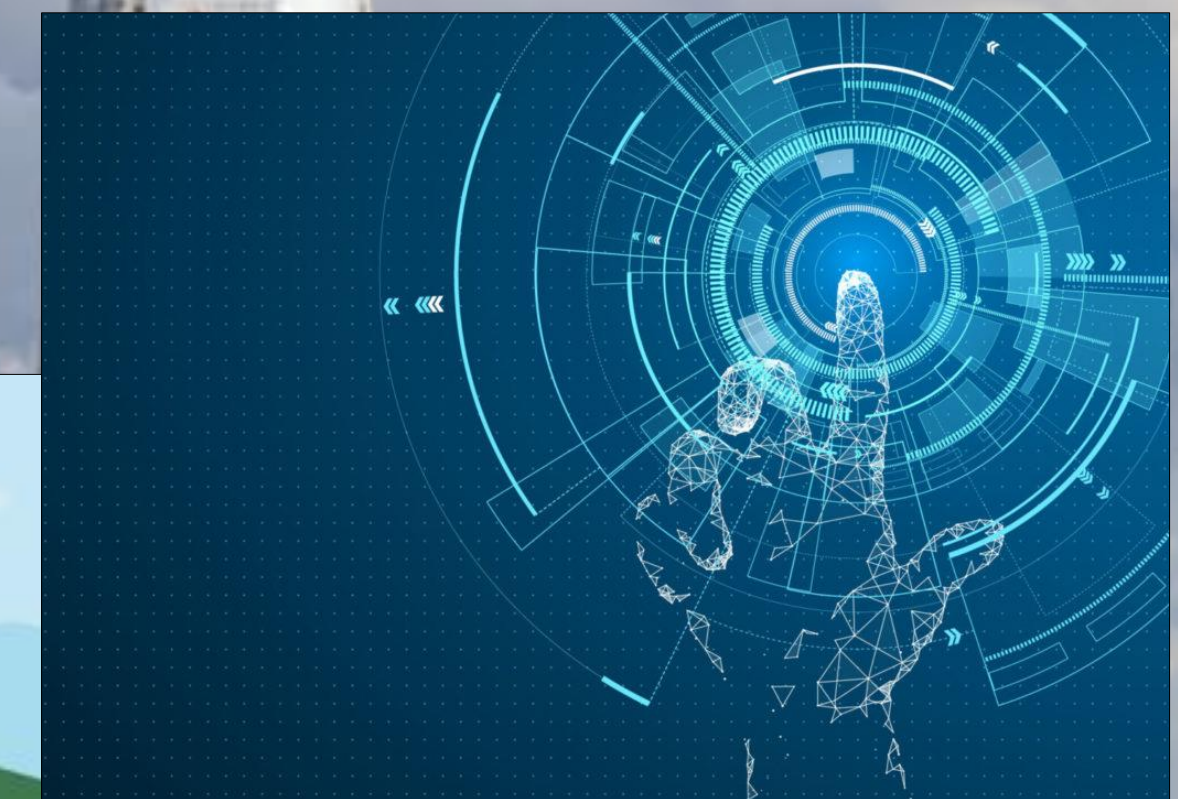
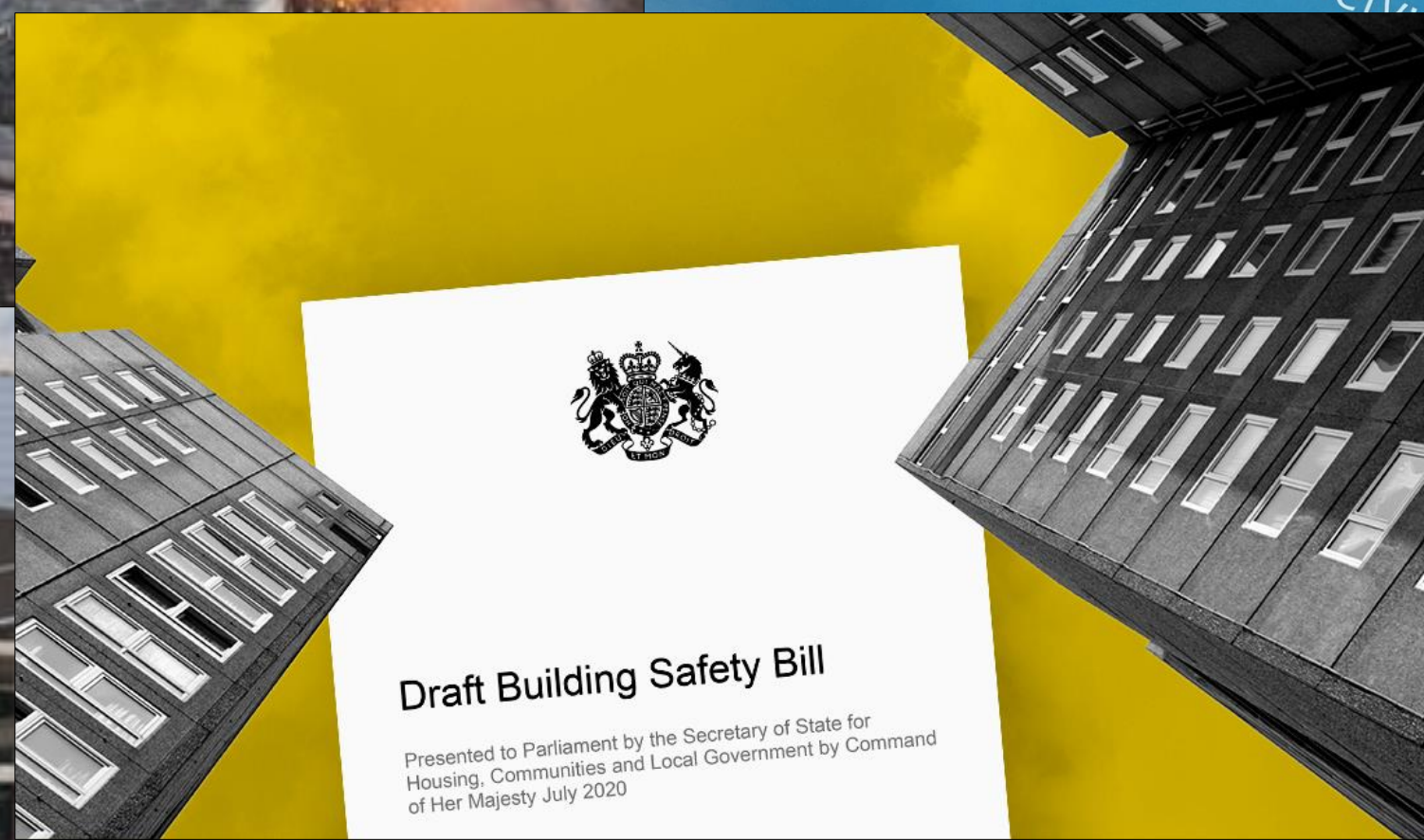
## Aims of Webinar:

- New landscape and challenges
- The draft Building Safety Bill
- The Construction Leadership Council
- Construction Products Competence
- Marketing Integrity Group
- Product Standards Review
- PAS 14191:2020
- LEXiCON
- Digital Object Identifier



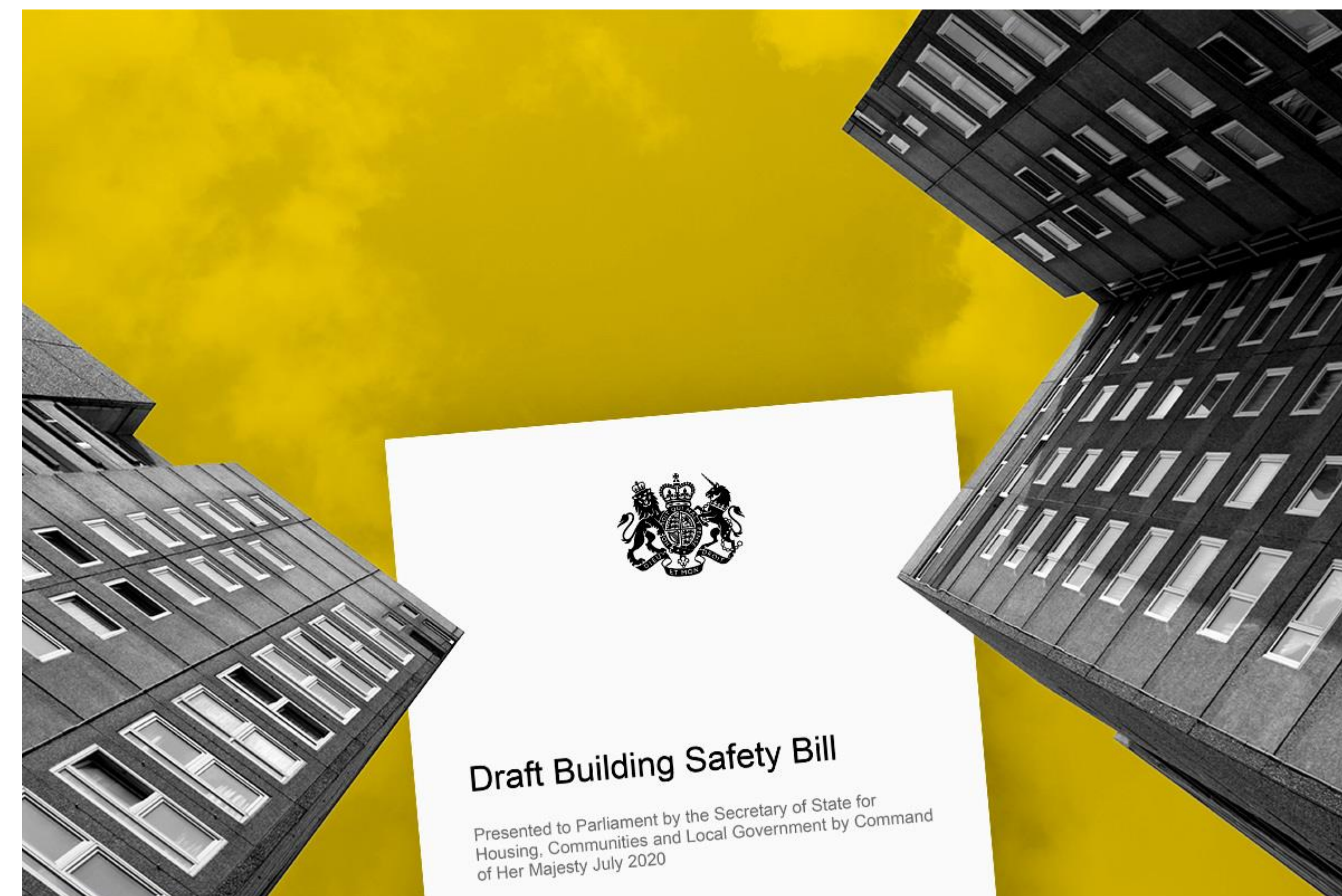
# The Landscape: what are the challenges?

## COVID-19 Construction **Payment Chain** Impacts



## Draft Building Safety Bill

- Published 20 July in draft form, to enable pre-legislative scrutiny
- Now going through public scrutiny phase, feedback highly encouraged
- Looking to introduce the Bill to parliament early 2021
- Expected to achieve Royal Assent by the end of 2021.
- HSE are setting up the **Building Safety Regulator** at the same time



## Draft Building Safety Bill

- Covers the new regulator, building control authorities, specific requirements for 'higher risk buildings', and the supplementary and general requirements.
- Scope of higher risk buildings written so it can be expanded.
- Duty holders that need to demonstrate a competent workforce.
- New National Regulator for Construction Products



## Construction Leadership Council – Roadmap to Recovery

- Key sectors: infrastructure, construction, housing and RMI
- 27 task groups on topics including: Building Safety; Brexit; skills; product availability; insurance; zero carbon; business models
- CLC due to publish their relaunched structure this week
- CPA highly involved in steering and sit on the majority of groups

### THE ROADMAP TO RECOVERY

The Construction Leadership Council has published the **Roadmap to Recovery**, which is a strategy to drive the recovery of the construction sector and the wider UK economy following the coronavirus (COVID-19) pandemic.

There are three phases to the Roadmap:



**RESTART**

Increase output, maximise employment and minimise disruption  
**(0 - 3 months)**



**RESET**

Drive demand, increase productivity and strengthen capability in the supply chain  
**(3 - 12 months)**



**REINVENT**

Transform the industry, deliver better value, collaboration and partnership  
**(12 - 24 months).**

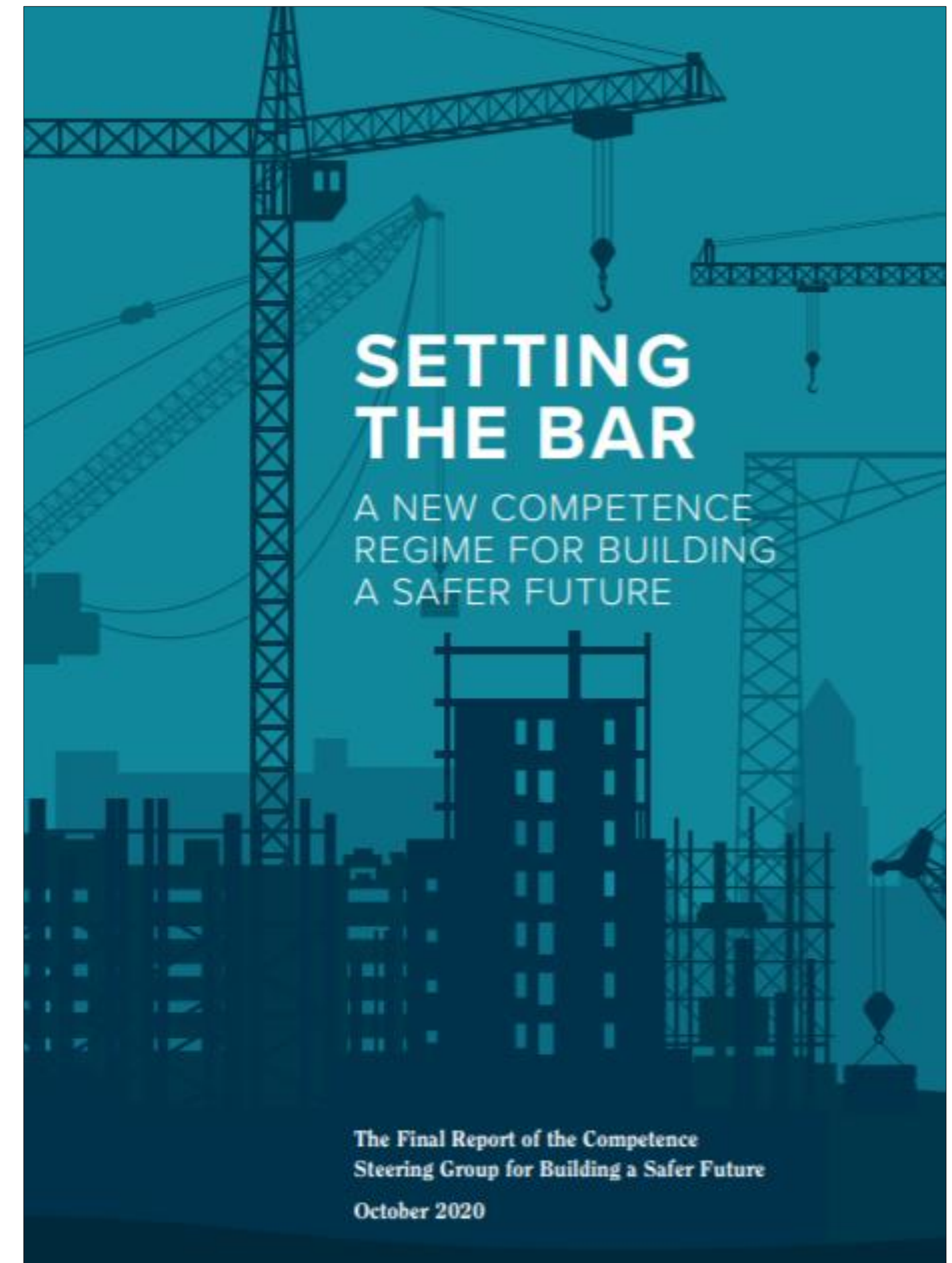
The outcome will be a more capable, professional, productive and profitable sector, which delivers better value to clients, better performing infrastructure and buildings, and competes successfully in global markets.

\* Image from BuildUK Roadmap to Recovery Executive Summary, available on CLC website.



## IRG Competence work

- Raising the Bar published August 2019
- Setting the Bar published October 2020
- WG 0 - Overarching framework
- WG 12 - construction product competence – for everyone
- WG 1-11 - identified occupations & professions
- BSI Built Environment Competence Standards (BECS) Strategy Group
- BSI Flex 8670 *Built environment – Overarching framework for competence of individuals – Specification*



## WG12 Construction Products Competence

- SKEB – Skill, Knowledge, Experience, Behavior
- Applies to everyone in the construction narrative, e.g. consultant, procurer, installation, maintainer et al.
- 5 levels of products competence, applicable not specific
- Manufacturers state levels of competence required to safely interact with products
- WG12 report and public consultation out Q4 2020



## Marketing Integrity

Hackitt challenge over the quality of product information

- CPA response: Marketing Integrity Group
- Create a voluntary code or scheme to ensure product information is clear, accessible, transparent, and unambiguous
- Undergoing technical review
- Report to outline the code and public consultation due Q4 2020



## Research into product testing

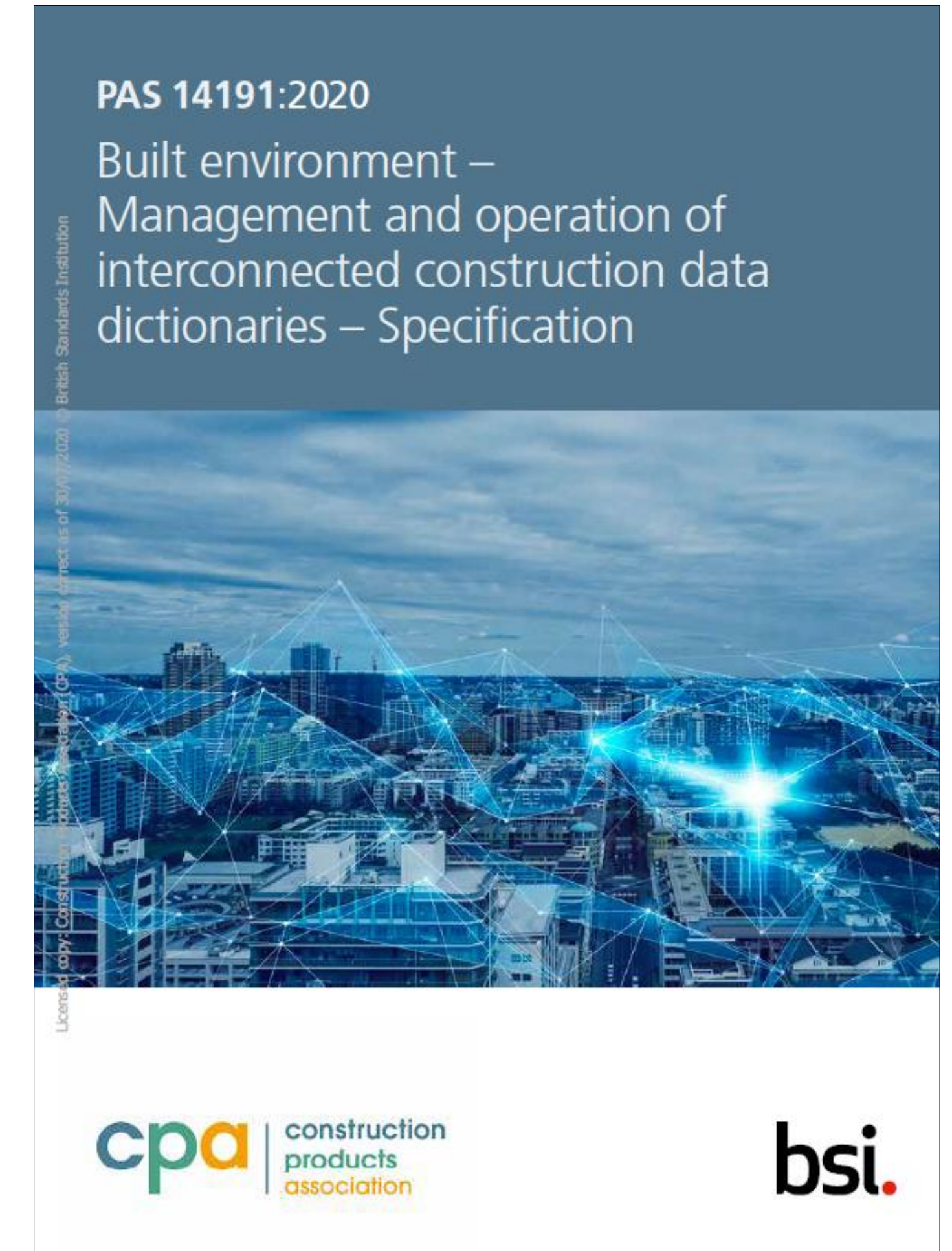
Commissioned by MHCLG, in partnership with PRP Architects and Adroit Economics

- Construction Products Standards Committee (CPSC)
- Examine current standards regime
- Gap analysis
- Prioritisation framework



## PAS 14191:2020 Built environment: Management and operation of interconnected data dictionaries - specification

- The PAS specifies requirements for a management process for the creation, acceptance, distribution, interoperability, and maintenance of structured information within construction data dictionaries.
- Complements BS EN ISO 23386:2020. This PAS adds to those concepts with a series of actionable steps and processes to fulfil those requirements.



## LEXiCON

- Joint venture by the Construction Innovation Hub (Hub) and CPA.
- Support international best practice for the creation and management of Product Data and Product Data Templates (PDT's)
- LEXiCON core working group chaired by Matt Crunden (Legrand), deputy chaired Steven Yeomans (Hub / BRE)
- Outputs of LEXiCON Core WG interim report expected Q1 2021 for public consultation
- Early adopters programme due to commence 2021



## Digital Object Identifiers

- A digital approach to construction product identification.
- RDF tag, QR code, bar code, nano-chip
- Perpetual website, with links to manufacturer information
- Run by BSI, supported by CPA and an industry advisory group
- Service due to launch Q1 2021
- BSI are keen to hear from anyone with an interest in early adoption and/or supporting the development by providing user feedback and test data





# Questions Thank you

Hanna Clarke

[www.constructionproducts.org.uk](http://www.constructionproducts.org.uk)

Hanna.clarke@constructionproducts.org.uk

tel: 0207 323 3770